



A Message from Your Co-Presidents
"Bridging the Merrimac" by Leslie Scott-Lysan

*"As we step into the new year, let us cross the bridge from our dreams into our realities, turning aspirations into achievements and hopes into actions."
- Unknown*

Greetings to all Lynnfield Art Guild Members and a very Happy New Year 2025 from your co-presidents!

As we wave goodbye to the holiday season and 2024, we eagerly anticipate our 61st year with the Lynnfield Art Guild. Reflecting on a creatively vibrant 2024, we're excited for 2025 to bring even more participation and enthusiasm from our wonderful members. Be sure to check out the update from Board Member Heidi Reynolds, who has been hard at work building new creative alliances across our community, giving you more opportunity to share your time and talent.

January is a time for resolutions, dreams of a brighter future, and aspirations for happiness and contentment. We wish you all a year filled with joy, health, and creativity. Let those artistic juices flow!

Wishing you a Happy New Year and a fantastic January! Let's make this another year the Lynnfield Art Guild will remember with pride!

Cheryl Chisholm & Cathy Grassello

Co-Presidents, Lynnfield Art Guild

[Visit Our Website](#)

What's Happening!



Community Outreach Project Updates

*By Heidi Reynolds,
Lynnfield Art Guild
Board of Directors*

Hello everyone!

I wanted to give you all an update on the community work I've been doing and offer up some opportunities for involvement this year. At the end of this article, you will find a link to a sign-up sheet if any of you are interested in participating!

LARCC (Lynnfield Art and Recreation Commission) So far, the participating groups who have joined the commission are Lynnfield Public Library, Lynnfield Community Schools, Lynnfield Recreation, Lynnfield for Love, Market Street, and Lynnfield Public Schools Art Department. We are consistently working to add more Lynnfield groups to the commission.

Adult Teaching and Learning Opportunities: Jimmy Olsen (director of Lynnfield Recreation) has expressed that space is available for anyone who wants to run an adult art class or workshop! Please put your name in the spreadsheet if you are interested in teaching or participating in an adult education class that will be held at one of the schools.

Free Little Art Galleries: The first gallery is currently at Huckleberry and the first group of students have made their artists books. They look great! I will be volunteering in the art room to help lead more artist book workshops if anyone would like to join. You do need CORI clearance. After Huckleberry, the project will move to Summer St. Elementary, The Lynnfield Senior Center, and then the Lynnfield Library. We also need a curatorial team to curate future Little Art Gallery displays which will showcase local artists.

Village Parklets: We have the support of the town management, the library, the Huckleberry Garden Club, and I am in conversation with the boy scouts. We could use volunteers for various opportunities which are listed in the spreadsheet.

Window Walk: I met with Arianna at Market Street, and she is on board to have a window walk this summer! I need to give her a head count of who is interested in displaying their work at a restaurant or shop at Market Street so she can let management know and start getting the stores on board. I have attached a sign-up sheet. This is not a hard commitment but just letting us know if you would be interested.

School Murals: Jimmy Olsen of Lynnfield Recreation is excited to help run a mural team this summer. He is able to hire and pay high school students to help lead a team of middle schoolers to design and paint a mural at a school location. We can use volunteers for help with design and execution.

[If you are interested in getting involved, click here to go to our Sign Up sheet today!](#)

Also, please contact me, [Heidi Reynolds](#), if you know of any businesses who may want to donate materials or sponsor a project. And as always, please feel free to share your questions or ideas with me!

~Heidi



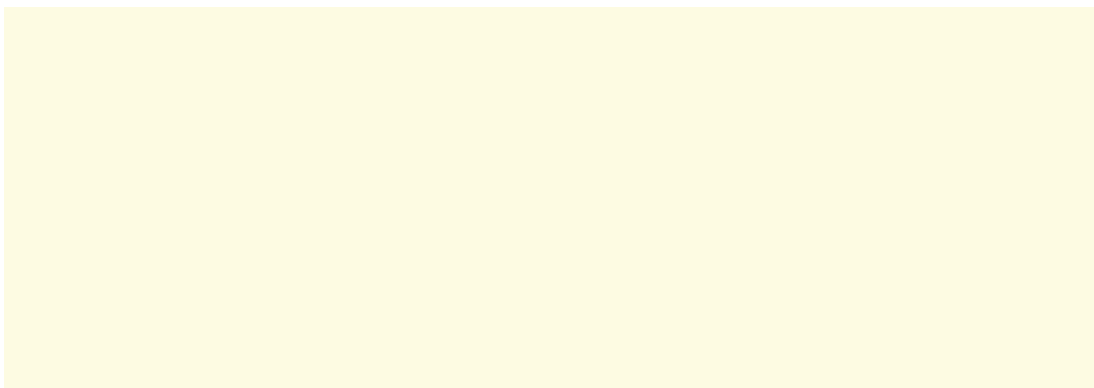
Put your heart in your art and volunteer for one or both of these fun events led by our Board Member and Community Outreach Director, Heidi Reynolds.

January 21 10:30-12:30: Collaboration with the Lynnfield Senior Center and the Writer's Room to collect stories and make mini art books. Lynnfield Senior Center, 525 Salem St., Lynnfield, MA.

January 23rd 4:30-6:30: Tiny gallery art opening and book-making event at Lynnfield Library (set up, help with book making). Lynnfield Public Library, 18 Summer St., Lynnfield, MA.

Contact Heidi today and let her know you can help! [Click here to add your name to the Sign Up Sheet.](#)

Exhibiting Artists





"Fall Vista: Mount Lafayette" Bethlehem, NH

**Paintings by Leslie Scott-Lysan
Appearing at Solo Art Show at
Society for the Protection of
New Hampshire Forests**

**New Hampshire Focused; Two-Month Exhibit Titled
"For the Love of My Ancestral Home"**

CONCORD, NH and WAKEFIELD, MA, January 2, 2025 — Paintings by Wakefield, MA-resident Leslie Scott-Lysan (www.lesliescott-lysan.com) are hanging in a solo art show at the Society for the Protection of New Hampshire Forests (www.forestssociety.org) Conservation Center.

The free exhibit "For the Love of My Ancestral Home" focuses on New Hampshire and is open to visitors through January and February 2025, on weekdays from 8:30 a.m. to 5 p.m., at the Forest Society's Conservation Center at 54 Portsmouth Street, in Concord, NH, about a one-hour drive from Wakefield. The organization will receive a portion of the proceeds from the sale of Leslie's art. Please call 603-224-9945 before visiting the exhibit, as the room may be booked for a meeting or event.

Leslie draws inspiration from color and light, whether she is working en plein air outdoors or working in her studio painting architecture, city scenes, or abstract creations. Making art for her is about working alongside the Creator. Leslie's work reflects her spirituality and the gratitude she feels when creating and while

outdoors. Her work has appeared throughout New England at juried art association shows, national shows, and resort properties. Leslie works in oil paints, cold wax, acrylic paints, mixed media, and photography. Her latest adventures are in mixed media cold wax and oil paint abstracts. Many of her paintings are impressionist-inspired en plein air creations with visible, luscious paintbrush and paint-knife strokes.

Leslie believes that her affinity for New Hampshire comes from her ancestry that goes back to the 1800s with each generation since living and vacationing there. This exhibit at the Society for the Protection of New Hampshire Forests, known as The Forest Society, draws from her life-long love of New Hampshire, including time spent fishing, hiking, canoeing, and picking wild blueberries at the family camp in Ossipee; and skiing as a member of the Brettl-Hupfer Ski and Sports Club in Bartlett. She created most of the paintings while on camping trips throughout the White Mountains and Great North Woods.

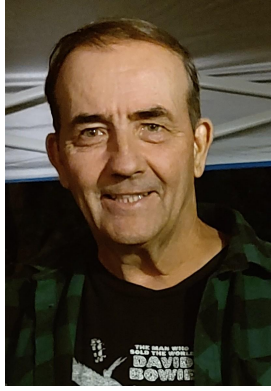
“I have been traveling to New Hampshire since I was a newborn, and my family has long roots there. I have long felt an emotional bond to the state that comes through my paintings. I visit there all seasons of the year,” says Leslie Scott-Lysan. “I believe in the mission of The Forest Society and am proud to do my small part in helping it conserve and care for New Hampshire forests that I so love.”

[To learn more about Leslie Scott-Lysan and her artwork, visit her website.](#)

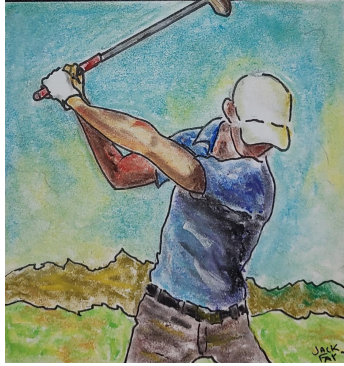


“Winter Is Coming: Little Haystack,” Franconia Notch State Park

**Couch Dog Brewing Company
Unleashes the Art of Jack Fay!**

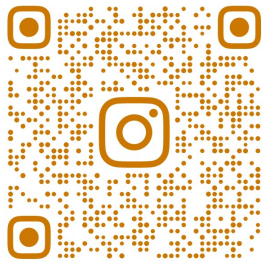


Kick off the new year with a winning combination of art and ale at Jack Fay's January art show at Couch Dog Brewing Company in Salem, MA! While the name might bark up a different tree, Jack's illustrations score big with a sports-centric theme that'll have fans cheering. Jack's creative playbook is a feast for the eyes. So, grab a craft beer and score yourself a work of art by Jack Fay.



(Left: "The Golfer")

(Below: "Billy's Closet")



@FAYZO_ART

The following LAG artists will be exhibiting their artwork at local banks, libraries and other venues over the next few months.

- **Mary Lynch's** artwork will be on display at **Wakefield Cooperative Bank**, January 2 to February 28.
- **Stephen Fantone's** photography will be on display at **North Shore Bank, 32 Main Street Branch** from January 2 to March 31.
- **Ana Ortins** will be featuring her watercolor artwork at the **Peabody South Library, 78 Lynn Street** from October 5, 2024, until January 5, 2025.

Library Hours:

Monday and Wednesday: 9:00 AM - 5:00 PM

Tuesday: 9:00 AM - 9:00 PM

Thursday: 1:00 PM - 9:00 PM

Closed on Friday and Sunday.

- **Beverly A. Cook** will be showing at Gallery Twist's Holiday Show, "Illumination"

Dates: December 6, 2024 – January 5, 2025

Location: 1963 Massachusetts Avenue, Lexington, MA.

Hours: Gallery Twist is open 11am – 5pm.
Closed Mon & Tues.

Please feel free to stop by these venues and support your LAG artists.
Invite your friends!

Interested in your own exhibit at one of these venues? Contact the following people for details:

[Carmen Arnone](#) for Wakefield Cooperative Bank at 617-605-6018

[Frank Tomasello](#) for North Shore Bank at 978-587-2884

To display art at the Lynnfield Public Library, contact [Pat Kelly](#)

To display at the Lucius Beebe Memorial Library, Wakefield, contact [Karen Stern](#), 781-246-6334, ext. 6569

To display art at the Stoneham Library, please contact [Maureen Saltzman](#), 781-438-1324

Editor's Note:

Please tell **Beverly** if you have an upcoming exhibit or are participating in an art show. We would love to share the news! Also, contact **Frank Tomasello** if you would like to display your artwork at North Shore Bank on Main Street Peabody. They want the walls to always have a display, so if Frank doesn't have anyone, he puts his art in there as a fill-in.



**Celebrating 60 Years:
The LAG Holiday Party**

The event was filled with joyous moments, including delicious food that delighted the taste buds, energetic dancing that kept everyone on their feet, and most importantly, an abundance of good cheer and friendship that was shared among all attendees. Old friends reconnected and new friendships were formed, creating lasting memories and reinforcing the strong sense of community within the Guild.

Here's to many more years of

Shines Bright

This year's LAG Holiday Party was an event to remember, marking the first festive gathering in recent memory. It was a splendid celebration on December 15 at the Saugus Everett Elks. It was the perfect opportunity for members and guests to come together and revel in the festive spirit. This special occasion also marked the culmination of the Guild's remarkable 60th year of celebrating the arts—a milestone that added an extra layer of significance to the event.

creativity, camaraderie, and unforgettable celebrations! [More photos on our website!](#)

Thanks To:

Saugus Everett Elks (Julie Martin)
 Avellino's Restaurant
 DJ Ken Babin



LYNNFIELD ART GUILD DEMOS

Watch your email for Demo details including the Zoom link.

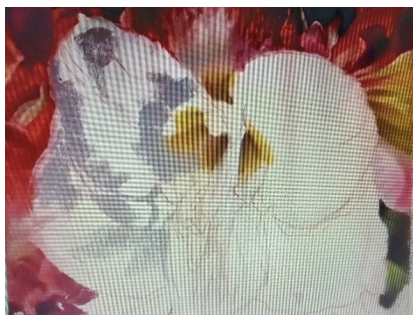
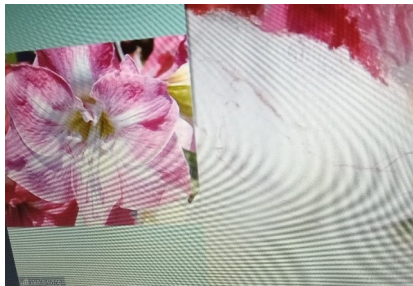
2025	Artist Demonstration
January 2025	No Demo
February 2025	Deidre Tao "Acrylic Coastal Landscapes"
March 2025	Beverly Cook "Painting with Fabric"
April 2025	Meg Black "Paper and Pulp"
Note: Upcoming Demos will be held via ZOOM	Order of events for ZOOM demos:
6:45 PM – 7:00 PM	Sign in for the meeting and socializing time.
7:00 PM -7:15 PM	President's announcements, welcome and introduction of the demonstrator.
7:15 PM – 8:15 PM	Demonstration by artist. All participants muted.
8:15 PM – 8:30 PM	All are unmuted for questions and answers.
8:30 PM - 8:45 PM	Thank the artist & Post meeting socializing.

Recap of October and November Artist Demos



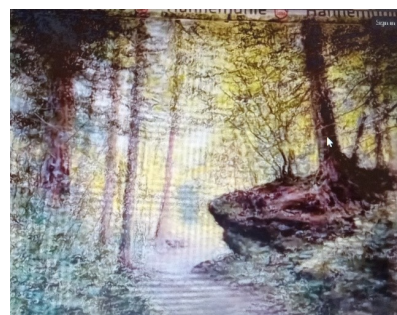
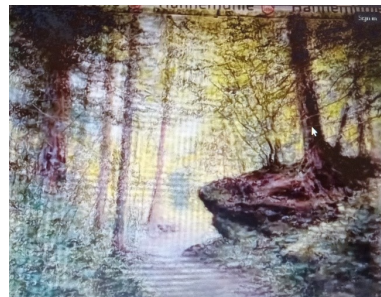
LAG welcomed the highly acclaimed artist Lyn Diefenbach in October 2024, to deliver a stunning demonstration on her technique for Floral Pastel. The Guild would like to thank Lyn for sharing her time and talents with us.

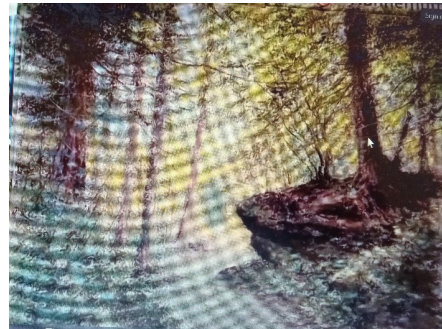
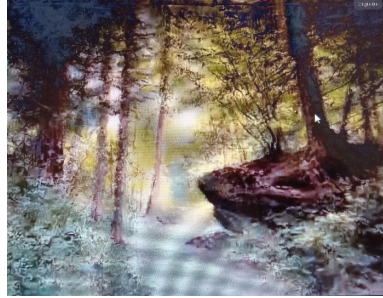
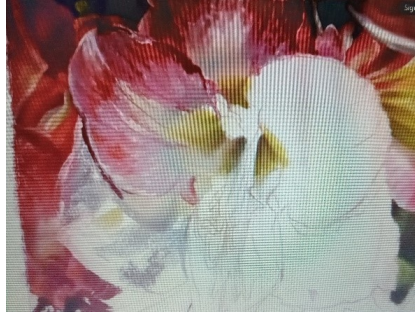
Here is a sample of images from Lyn's demonstration.



In November 2024, the amazing and entertaining Mark Ivan Cole shared how life has shaped his art and delivered a captivating demonstration of Woodland Pastels. The Guild is grateful to Mark for spending his time with us.

Here is a sample of Mark's artwork demonstration.





Discover the World Through the Lens of Sue Collins

We're thrilled to feature the breathtaking work of travel photographer Sue Collins as LAG's first Featured Artist of 2025! Sue masterfully intertwines her love for travel and photography, capturing the essence of diverse landscapes and cultures in her stunning imagery.

Immerse yourself in Sue's collection of awe-inspiring photos from around the globe. From serene beaches to bustling cities, each image tells a unique story of adventure and discovery.



Explore Sue's [Featured Artist Page](#) on

our LAG website from January 15th to February 28th. Reach out to the artist herself to learn more about her work or to inquire about purchasing her photography.



Join Our LAG Featured Artist Program

This is a great opportunity to showcase your artwork and gain exposure.

The LAG Featured Artist Program offers members the opportunity to have their own personalized web page with a unique address on the LynnfieldArts.org website. The site address or URL can be used to display your art, and members have the option to include prices and a contact method for sales. Each Featured Artist is publicized via a series of announcements on the LAG website home page, social media, and the local press. In addition, the Featured Artist page will be promoted in our Online Gallery for 2 months after which time the artist will be permanently listed on the Member's Art page. Ready to be our next Featured Artist? All the information you need is here on our website.

If you have questions or need more information, contact [Greg Pronevitz](#) of our LAG web team, or [Maya Jacob](#), our Featured Artist coordinator.

Calling all LAG Artists: Add your best work to our Members' Art Gallery

Dear Member Artist, do not overlook this simple opportunity to gain exposure for your artwork. We have launched a project to update our website, and we want to include your art. We have made great progress, but we would love to see more of you contribute to the gallery. We hope to have as many



members as possible represented in our refreshed Members' Art Gallery.

LAG members are invited to submit one image of their art for this gallery. [Click here for instructions on how to submit your work for the Members' Gallery.](#)

If you have questions, please contact [Greg Pronevitz](#) from LAG's Web Team.



Newsletter Postings: Tell Bev About It!

Got something to add to our monthly newsletter? Let Bev Tomasello, our LAG Newsletter Editor, know about your shows, exhibits, awards or other news, and we will share it here in our newsletter and on our social channels.

Send your news to:

Contact: [Bev Tomasello](#) P: 978-587-2884 (leave a message)

Content for the LAG February 2025 Newsletter is due on **January 20, 2025.**

Also, please contact Bev if you know of a member who is ill or passed

away. A get well or sympathy card will be sent on behalf of Lynnfield Art Guild.

We Are Social!



Do you have some social news to share with Lynnfield Art Guild? Want to feature your latest artwork on Instagram? Contact [Sheila Falco](#) and she will share your art on our IG page. Also, contact [Kendall Inglese](#) if you have something you would like to share to our Facebook page.

P.O. Box 12
Lynnfield, MA 01940

Contact Us



Our Mission Statement

Lynnfield Art Guild (LAG) is vibrant, visual and starting a new voyage. We welcome aboard all members who wish to satisfy their sense of adventure through art and camaraderie with fellow artists, artisans and art explorers. We are all on the same ship that will take each of us on our own exceptional voyage of discovery. Every member of our crew is valued and respected for their unique artistic vision and expression. Join us today and embark on a new voyage with LAG!

Join LAG Today!

Join our vibrant and exciting artistic community today as a member artist or supporter. [You can join or renew your membership directly on our website.](#)

LYNNFIELD ART GUILD



Lynnfield Art Guild | PO Box 12 | Lynnfield, MA 01940 US

[Unsubscribe](#) | [Update Profile](#) | [Constant Contact Data Notice](#)



Try email marketing for free today!