



A Message From Your Co-Presidents

"Early Spring," Dan Abenaim

Greetings of the season from Co-Presidents
Cathy Grassello and Cheryl Chisholm

April beckons us to awaken our senses and embrace the surge of creativity within us. The seeds of our Spring Festival and Art Show are sprouting, and our demonstrations continue to thrive. Our latest community initiative, "Meet the Artist," featuring photographer Cathy Grassello, was met with resounding applause in March. The series continues in April (see article in this newsletter), with acrylic/oil painter and past LAG president, Dan Abenaim.

We extend our heartfelt gratitude to the LAG team, whose unwavering support keeps the Lynnfield Art Guild an integral and vibrant part of our

community. Let the month of April kindle your curiosity and open a world of boundless creative potential. We eagerly anticipate experiencing this vibrant month with you.

Cheryl Chisholm and Cathy Grassello
Co-Presidents, Lynnfield Art Guild

Visit Our Website

What's Happening!



Spring Festival & Art Show Update!

Excitement is growing as our **May 4th Spring Festival and Art Show/Sale** approaches.

You will find something for everyone at this year's event! In addition to our fine art show and sale inside the Town Meeting House, there will be vendors galore and great entertainment on the Lynnfield Common. And to commemorate the 60th anniversary of LAG, we are holding a silent auction of artwork by two greatly admired LAG past presidents. And, get ready to cheer along with

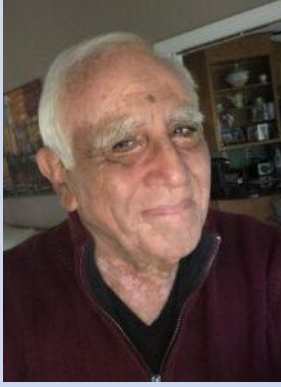
the fabulous "POMtastics", and dance to the rhythms of the "Swamptones."

If you are interested in setting up a table outside, **please complete this Vendor Registration form.** LAG active Artists who wish to enter our judged art show should **complete the Artist Registration form.**

The deadline to submit the Vendor Registration and Artist Registration forms is **April 20, 2024.** We can't wait to see you there!

April's "Meet the Artist" Event with Dan Abenaim

Join us on Wednesday, April 17th at 6:00 PM at the Lynnfield Public Library Mezzanine for an engaging evening with Dan Abenaim, a distinguished member and former president of the Lynnfield Art



Guild (LAG).

Following March's successful launch, we're excited to feature Dan, an accomplished acrylic/oil painter renowned for his innovative approach and diverse styles. His award-winning art is celebrated in private collections and as a LAG Featured artist, [his gallery is available for viewing on the Lynnfield Art Guild website.](#)

This event promises an intimate glimpse into Dan's artistic journey and techniques. It's a perfect opportunity for art enthusiasts, from seasoned painters to those simply intrigued by the creative process, to interact directly with Dan.

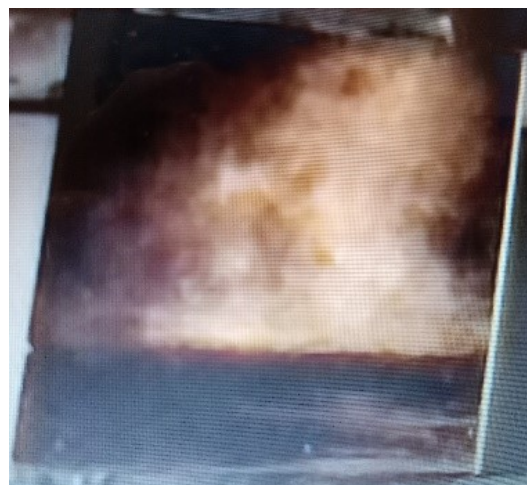
Enjoy a relaxed atmosphere with refreshments and immerse yourself in the world of art.

The Lynnfield Library is proud to offer this monthly series, inviting all LAG artists to connect with our community of art aficionados. Whether you prefer a laid-back chat or a structured presentation, the choice is yours.

~~~~~  
If you would like to be the next "Meet the Artist" speaker, please reach out to [Cheryl Chisholm](#) at 978.839.3077. This invitation is open to all active LAG members. The Lynnfield Public Library has the following openings for the remainder of this year:

- Wednesday, September 11, 2024
- Wednesday, October 9, 2024
- Wednesday, November 13, 2024

Please provide a headshot and brief artist statement. This is a great opportunity to gain exposure and experience!



Re-Cap of March's Demo with Christopher Volpe

On behalf of the Lynnfield Art Guild,

**Light in Watercolor**  
**Presented by**  
**Katharine Krieg**  
**Thursday, April 18, 2024**  
**7:00 – 8:30 p.m.**  
**(via Zoom)**

Katharine Krieg is a contemporary artist creating works of marine and rural landscape and narrative still life.

Her works are done primarily in oil painting, but she is also accomplished in the mediums of watercolor and charcoal. Inspired by her surroundings, she feels her paintings are her answers to what she observes. A quiet sense of introspection and the passing of time are themes that recur in her works.

She maintains a home studio in Montgomery County, PA as well as a summer studio on Monhegan Island, ME.

She is honored to have been accepted into national as well as regional open juried shows and invitational shows. Her work can be found in collections throughout the United States. She teaches both private lessons and workshops in the studio and plein air.

**Watch your email for Demo details including the Zoom link.**

we would like to thank Christopher Volpe for a fabulous and fascinating demonstration of his painting technique using “tar” as a painting medium!

In his presentation Christopher shared stunning examples of his work and the artists he admires. It was informative, detailed and very inspiring.

In addition to creating and exhibiting his work, Christopher also authors the daily newsletter "INSIDE ART-Inspiration for Artists." If interested, you can [subscribe here](#).

Christopher and his wife Anna Birch also run the [Hollis Art Space in Hollis, NH](#) featuring art lessons and a gift shop filled with the work of local artists and artisans.

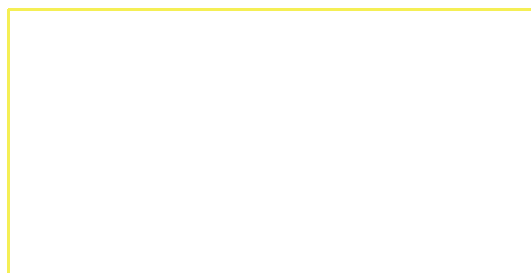
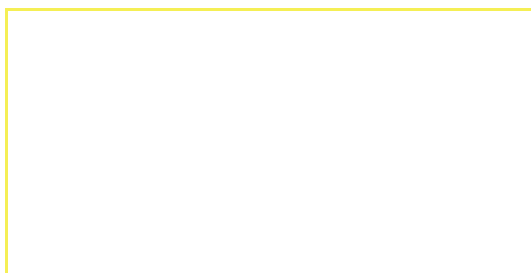
Christopher will also be exhibiting new small works in tar at [New England Sketchbook](#) in Newburyport, MA beginning on Saturday May 4, which will coincide with Newburyport Art Walk.

Thank you, Christopher, for an enlightening and enjoyable demonstration.





| 2024                                       | Calendar of Demos & Events                                               |
|--------------------------------------------|--------------------------------------------------------------------------|
| April 18, 2024                             | Katharine Krieg<br><b>Light in Watercolor</b>                            |
| Note: Upcoming Demos will be held via ZOOM | Order of events for ZOOM demos:                                          |
| 6:45 PM – 7:00 PM                          | Sign in for the meeting and socializing time.                            |
| 7:00 PM -7:15 PM                           | President’s announcements, welcome and introduction of the demonstrator. |
| 7:15 PM – 8:15 PM                          | Demonstration by artist. All participants muted.                         |
| 8:15 PM – 8:30 PM                          | All are unmuted for questions and answers.                               |
| 8:30 PM - 8:45 PM                          | Thank the artist & Post meeting socializing.                             |







instructions on how to submit your work for the Members' Gallery.

If you have questions, please contact Greg Pronevitz from LAG's Web Team.



## Join Our LAG Featured Artist Program

This is a great opportunity to showcase your artwork and gain exposure.

### LAG Artists' Solo Exhibits

The following LAG artists will be exhibiting their artwork at local banks, libraries and other venues over the next few months.

**Anne Mullen** will display her paintings at the **West Branch Library Peabody, 603 Lowell Street, West Peabody** until June.

Kathryn Roderick's paintings will be on display at **Wakefield Cooperative Bank** from March 1 to April 30.

**Frank Tomasello's** paintings will be on display at **North Shore Bank, 32 Main Street Branch** from April 2 to July 31

Please feel free to stop by these venues and support your LAG artists. Invite your friends!

Interested in your own exhibit at one of these venues? Contact the following people for details:

[Carmen Arnone](#) for Wakefield

The LAG Featured Artist Program offers members the opportunity to have their own personalized web page with a unique address on the [LynnfieldArts.org](http://LynnfieldArts.org) website. The site address or URL can be used to display your art and members have the option to include prices and a contact method for sales. Each Featured Artist is publicized via a series of announcements on the LAG website home page, social media, and the local press. In addition, the Featured Artist page will be promoted in our Online Gallery for 2 months after which time the artist will be permanently listed on the Members' Art page. [Ready to be our next Featured Artist? All the information you need is here on our website.](#)

If you have questions or need more information, contact Greg Pronevitz of our LAG web team, or Maya Jacob, our Featured Artist coordinator.

Cooperative Bank at 617-605-6018

[Pat O'Connor](#) for The Savings Bank  
at 978-887-6624

[Frank Tomasello](#) for North Shore  
Bank at 978-587-2884

To display art at the Lynnfield  
Public Library, contact [Pat Kelly](#)

To display at the Lucius Beebe  
Memorial Library, Wakefield,  
contact [Karen Stern](#), 781-246-6334,  
ext. 6569

To display art at the Stoneham  
Library, please contact [Maureen  
Saltzman](#), 781-438-1324

#### Editor's Note:

Please let Frank Tomasello know if  
you would like to display your  
artwork at North Shore Bank on  
Main Street Peabody. They want  
the walls to always have a display,  
so if Frank doesn't have anyone, he  
puts his art in there as a fill-in.



#### Newsletter Postings: Tell Bev About It!

Got something to add to our monthly  
newsletter? Let Bev Tomasello, our LAG  
Newsletter Editor, know about it. Send your  
news to:

Contact: [Bev Tomasello](#) P: 978-587-2884 (leave a message)

**DEADLINE for the May 2024 newsletter submissions: April 20, 2024**

Also, please contact Bev if you know of a member who is ill or passed away.  
A get well or sympathy card will be sent on behalf of Lynnfield Art Guild.

#### We Are Social!

Do you have some social news to share





with Lynnfield Art Guild? Want to feature your latest artwork on Instagram? Contact [Sheila Falco](#) and she will share your art on our IG page. Also, contact [Kendall Inglese](#) if you have something you would like to share to our Facebook page.

P.O. Box 12  
Lynnfield, MA 01940

Contact Us



### *Our Mission Statement*

Lynnfield Art Guild (LAG) is vibrant, visual and starting a new voyage. We welcome aboard all members who wish to satisfy their sense of adventure through art and camaraderie with fellow artists, artisans and art explorers. We are all on the same ship that will take each of us on our own exceptional voyage of discovery. Every member of our crew is valued and respected for their unique artistic vision and expression. Join us today and embark on a new voyage with LAG!

### Join LAG Today!

Join our vibrant and exciting artistic community today as a member artist or supporter. [You can join or renew your membership directly on our website.](#)

LYNNFIELD ART GUILD



[Our Board](#)

[Exhibits](#)

[Sponsors](#)

[Membership](#)

[Unsubscribe cathygrassello@comcast.net](#)

[Update Profile](#) | [Constant Contact Data Notice](#)

Sent by [info@lynnfieldarts.ccsend.com](mailto:info@lynnfieldarts.ccsend.com) powered by



Try email marketing for free today!